

Walk 3



Marina to Bettisfield and return

Distance: 7 miles/11km

Approximate duration: 3 hours

NB: This walk can be shortened

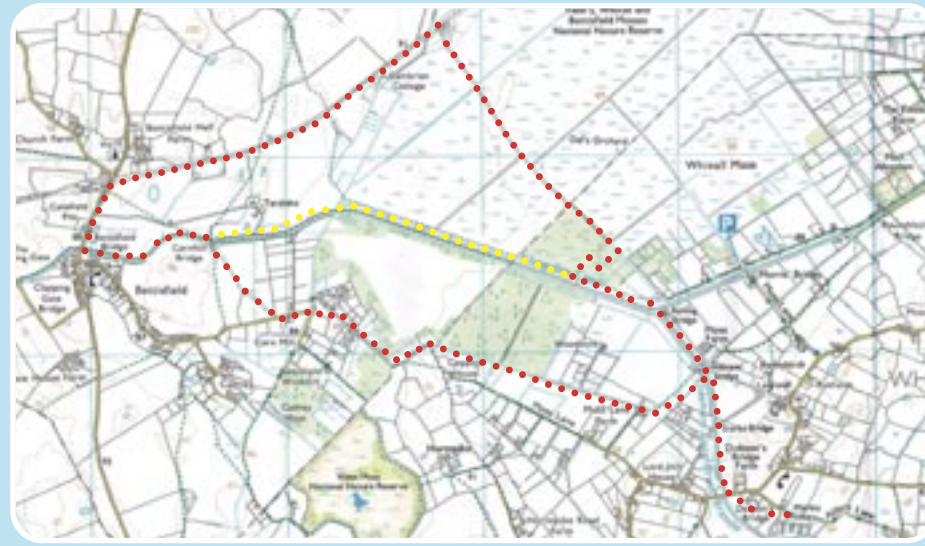


From the marina, take the walkway (located close to the café) to Dobson's Bridge (No. 3) to access the canal towpath. Proceed onto the towpath, passing under the bridge and walk along the towpath of the Prees Branch. Pass-by Stark's Bridge (No. 2) and proceed to Allman's Bridge (No. 1).

Cross Allman's Bridge and follow the track as it descends to a farm gate (marked Whixall Walks). Follow the brook line on your left, proceed through a pedestrian gate and turn right towards the farmyard. Go through two gates and follow the track for about 300 yards. (From this point you are now following The Shropshire Way signs until you arrive at Bettisfield.)

The track veers sharp right but you continue straight on along a smaller grassy path through a lush alley of silver birch. After about a quarter of a mile you cross another path to continue straight on. You are now on Bettisfield Moss, lesser known sister of Whixall Moss.

After another quarter of a mile you will pass through some wooden fence posts into a rough field to follow a fainter path. Cross a small wooden plank bridge over an open drainage ditch and follow the trail along the left hand hedge line, keeping to the left of a big oak tree.



This soon brings you to a metal gate into a wooded area. Go through the gate and turn right along a clear path.

The path soon emerges onto Cadney Lane which you follow past some cottages. The path becomes a tarmac road. Follow this round a left-hand bend. Shortly after the bend, turn right opposite Brook House and look for a stile on the right after about 200 yards between some large oak trees. Cross the stile and head across fields towards the church in the distance. After crossing a brook and another stile, cross the next field towards the copse of trees that is slightly to the right of the church spire. Enter the copse and you will reach the canal crossing it at Cornhill Bridge.

If you're not visiting Bettisfield and want a shorter walk, cross the bridge and turn right along the canal towpath and keep walking along the towpath until you arrive at Roving Bridge (No. 43). Cross the bridge and you will be on the Prees Branch heading back to the Marina.

For the longer walk indicated on the map: Cross Cornhill Bridge and turn left and walk along the towpath until you get to Bettisfield Bridge. Walk onto the road and turn left. Walk past the old school house on your left and then drop down to take the bridlepath on the left and you will see the old railway station. Turn right and walk along the old railway track passing Cambrian Cottage.

Keep walking until you come across the shell of the Fenn's Old Works. Walk around the derelict building and follow the Mosses Trail No 16.

Keep on the Mosses Trail until you get to Marker Post 18 where you will cross the Wales/England border.



Pass point 9 on the right and at marker point 10 turn right. Keep walking until you get to marker point 11, turn left and you will find your way back onto the towpath.

Turn left, walking along the canal-side until you get to Roving Bridge. Go over the bridge and get onto the Prees Branch. Continue until you arrive back at Dobson's Bridge (No. 3) and take the walkway back to the marina.



Whixall Marina

LOCAL CIRCULAR WALKS FROM THE MARINA

Whatever the time of year, there are many lovely walks to enjoy in our local area taking in the stunning Shropshire countryside, the canal and the historic mosses which are just a stone's throw away from the marina.

Here's three walks to try, of varying distances, all starting and ending at the marina. We're sure you'll find the refreshments in our café a bonus, whether before you set out or when you've finished your walk.

Enjoy your walk

Whixall Marina

Alders Lane, Whixall, Shropshire SY13 2QS

T: 01948 880420

E: enquiries@whixallmarina.co.uk

Café telephone number: 01948 880701

www.whixallmarina.co.uk

What3Words: send.fool.shelving

Walk 1



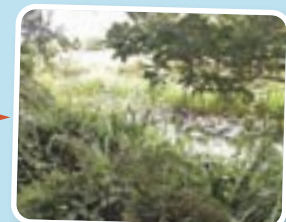
Canalside Walk

Distance: 2.5 miles/4km
Approximate duration: 1 hour



Turn right out of Marina car park. The tarmac road turns into a grass bridleway which can be muddy, so wellington boots or walking shoes are recommended. Straight ahead and then past Alders Farm on the right-hand side. At the end of the road there is a small grass triangle in the middle of the road, turn right and carry on straight on the tarmac road, past the finger post towards Northwood, passing Whixall Hall on the right.

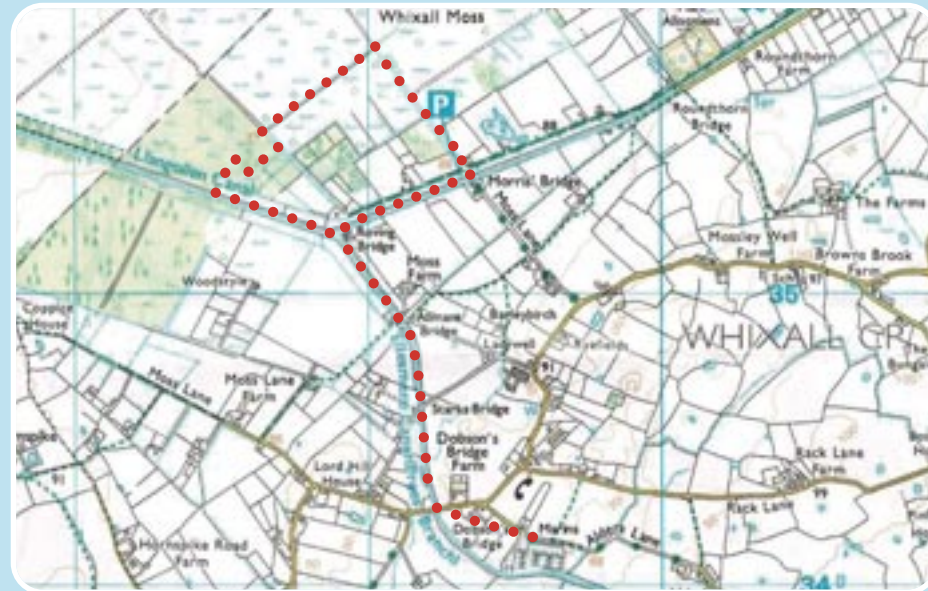
As you arrive at Waterloo Bridge, go through the gate reading the Nature Reserve Information Board as you pass. Follow the canal path, under Bridge No 4, Boodles Bridge, through the Nature Reserve and you will soon see Whixall Marina on the right-hand side. Continue along the canal to Dobson's Bridge (No. 3) and take the walkway back to the marina.



Walk 2

Canalside and Whixall Moss

Distance: 3.2 miles/5km
Approximate duration: 1 hour 15 min



From the marina, take the walkway (located close to the café) to Dobson's Bridge (No. 3) to access the canal towpath. Proceed onto the towpath, passing under the bridge and walk along the towpath of the Prees Branch. Pass-by Stark's Bridge (No. 2), Allman's Bridge (No.1) and at Roving Bridge (No.46), cross over the canal and join the towpath of the Llangollen Canal. Walk along the towpath, taking the direction of Llangollen. After approximately 0.3 of a mile, go down the wooden steps and walk onto Whixall Moss taking in the information provided on the notice board.

Walk on the Mosses Trail and when you come to Marker Post 11, turn right and continue until you get to Marker Post 10 where you turn left and then almost immediately right. Keep on the Mosses Trail and you will come upon Marker Post 8 on the left and at this point turn right and you should be able to see a wooden gate in the distance.

As you pass through the gate you will have an opportunity to read about the Marches Mosses Bog Life Project. Further on is the history of Albert Allmark's Peat Mill and as you walk up to Morris's Bridge (No. 45) turn right and re-join the towpath along the Llangollen Canal.

You will walk past the site of Furber's Scrap Yard on the right and more great views of the Moss until you arrive back at Roving Bridge (No. 46) and you go across the bridge to get back onto the Prees Branch of the canal to complete the last stretch of this circular walk. Arriving back at Dobson's Bridge (No. 3), take the walkway back to the marina.



The walks in this leaflet have been compiled by local people. Please note: while we have tried to ensure that the information included in each of the walks is as accurate as possible, it is intended as a guide only and you may wish to refer to the local OS map for specific details of paths and local features.